



Hotel Vila Galé Porto

Accommodation — Hotels / Apartment hotels / Hostels / Guesthouses



Street
Avenida Fernão Magalhães, 7 4300-190
Bonfim, Porto (Porto)
Portugal

Contact
Tel +351 225 191 800
porto@vilagale.com
<http://www.vilagale.com>

Created by
Técnico AP - IB 15/01/2018

Last modification by
Tecnico AP - SD 11/07/2019



The accessibility of this tourism resource has been analyzed by experts

General Information

Este hotel de 4 estrelas está situado no centro do Porto, a 300 metros da Estação de Metro de Campo 24 de Agosto. O Vila Galé Porto tem um centro de bem-estar com piscina interior. A zona comercial da Rua de Santa Catarina está a 10 minutos a pé. Os espaçosos quartos e suites do Vila Galé Porto têm ar condicionado e uma decoração luminosa. Todos incluem uma televisão de ecrã plano por cabo, um mini-bar e uma casa de banho privativa com secador de cabelo e produtos de higiene pessoal gratuitos. O Hotel tem 5 quartos adaptados, diretorios A a Z e menus do restaurante em braille, alguns quartos com alarme visual (como segurança para a pessoa surda) e formação em atendimento inclusivo.

Entrance



Entrance: No slopes

✓ Name of the tourist resource clearly visible and legible

The entranceway analysed is: The main one

Width of the entrance door: Greater than or equal to 78 cm

Customer Service Area

✓ Customer service desk

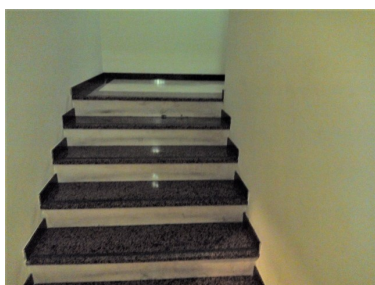
Characteristics



✓ Near the entrance

✓ Height suitably adapted for wheelchair users

Inside circulation



Wheelchair circulation: Total

Adequate lighting: No

✓ Without elements that can suppose an obstacle for a person with a visual disability

Signposting: Yes

Characteristics

Signs: With colour-contrasted texts

✓ Establishment with more than one floor

Vertical itinerary

Transit between floors via: Lift / lifts, steps / stairs

Lift information

Dimensions of the cubicle: Big

✓ With audio information

✓ Lift buttons at a suitable height for wheelchair users

Stair information

Number of steps: More than 3

Height of the step in cm: 17

✓ Hand rail

✓ Edge of the steps with a colour-contrasting, anti-slip strip

Adapted room

✓ Room adapted for people with a physical disability

Characteristics



Number of adapted rooms: 5

Number / name of the room: 516

Comfortable circulation to the room: Yes

Door width : Less than 78 cm

Manoeuvre area with a diameter greater than or equal to 150 cm: Yes

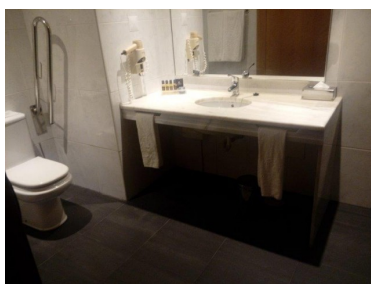
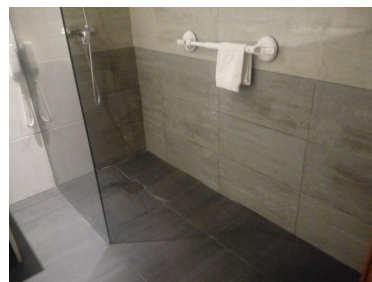
Space to the side of the bed: Yes

Information

The space is at least 90 cm or greater: On the left-hand side

Height of the bed in cm (including mattress): 47

Bathroom



Access without differences in height: Yes

Door width: Greater than or equal to 78 cm

Door opening: Sliding

Free turning space ? 150 cm of diameter: No

Clear space to transfer to the toilet: Yes

Characteristics

The space is at least 80 cm or greater: Right-hand side

Height of the toilet seat: Standard (between 40 and 45 cm)

Toilet next to the shower: No

There are grab bar(s): Yes

Information

Toilet grab bars: Left-hand side

The bars on the left-hand side are: Folding

Sink: With mixer tap, without pedestal

✓ Shower

Characteristics

Shower at ground level: Yes

Space greater than or equal to 80 cm approach: Yes

Grab bar(s) in the shower: Yes

Mixer water tap: Yes

Adjustable height shower head: Yes

Shower seat: Yes

Seat type: Mobile

✓ Room adapted for people with a visual disability

Characteristics



✓ Comfortable circulation to the room

✓ Big and of contrasting colour room number

✓ Doors of contrasting colour

✓ Without elements that can suppose an obstacle for a person with a visual disability

✓ Information of the services in braille

✓ Switches and sockets of contrasting colour

✓ Emergency sound signals

✓ Room adapted for people with an auditory disability

Characteristics



- ✓ Internet connection
- ✓ Written information of the services
- ✓ Visual emergency signals

Restaurant and bar areas



Counter at a height adapted for a person in a wheelchair: No

- ✓ Menu in braille
- ✓ Menu for people with special dietary needs (celiac disease, diabetes, allergies,...)
- ✓ Table service available

Accessible tables: No

- ✓ High chair for children

Adapted toilet in common areas

- ✓ Toilet suitable for PRM

Characteristics



Access without changes in floor level: Yes

Door width: Greater than or equal to 78 cm

Door opening: Outward

Free turning space ? 150 cm of diameter: No

Clear space to transfer to the toilet: Yes

Characteristics

The space is at least 80 cm or greater: Right-hand side

Height of the toilet seat: Standard (between 40 and 45 cm)

It has support bar(s): Yes

Information

Toilet grab bars: Left-hand side, right-hand side

The bars on the left-hand side are: Folding

The bars on the right-hand side are: Folding

Sink: With mixer tap

Services and amenities

Sufficient information provided about accessibility to the tourist resource : Yes

Magnetic induction loop: No

- ✓ Documentation with information about the tourist resource

Brochures, dossiers, menus, etc.

Features of the documentation: In braille

- ✓ Customer service staff

Staff training

Personal trained in attention to people with disabilities : Yes

Personal available to support people with specific needs: Yes

Personal with knowledge of Sign Language: No

- ✓ Materials available

Support Products

- ✓ Wheelchair manual

PRM Parking

- ✓ Parking lot reserved PRM

Characteristics



Next to the establishment: Yes

Belongs to the establishment: Yes

Surface of the parking lot: Horizontal

Well indicated: Yes

With appropriate dimensions: Yes

Outside areas

Uniform and anti-slip pavement: Yes