



Academia Equestre João Cardiga

Leisure — Adapted leisure activities



EQUITAÇÃO PARA TODOS

Street

Estrada caminho da serra, 2740-030
Barcarena, Oeiras (Lisboa)
Portugal

Contact

Tel +351 214 212 261
geral@academiaequestrecardiga.com
<https://www.academiaequestrecardiga.pt/>

Created by

Técnico AP - IB 03/09/2018

Last modification by

Técnico AP - IB 05/09/2018



The accessibility of this tourism resource has been analyzed by experts

General Information

A Academia Equestre João Cardiga é uma instituição reconhecida e homologada pelo Instituto do Desporto e Juventude, Federação Equestre Portuguesa e Escola Nacional de Equitação. É composta por uma equipa multidisciplinar constituída por Técnicos de Equitação Credenciados, Treinadores de Disciplina e Técnicos de Saúde (fisioterapeutas e Reabilitação Psicomotora e Educação Especial). A sua missão centra-se em promover a equitação para Todos tendo por base o respeito pela diferença. Os seus serviços passam pela formação, competição e equitação com fins terapêuticos.

Entrance



Entrance: Inclined plane / ramp

Ramp information

The slope makes the ramp : Can be used autonomously

- ✓ Name of the tourist resource clearly visible and legible

The entranceway analysed is: The main one

Width of the entrance door: Greater than or equal to 78 cm

Customer Service Area

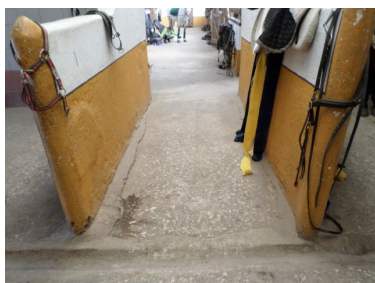
- ✓ Customer service desk

Characteristics

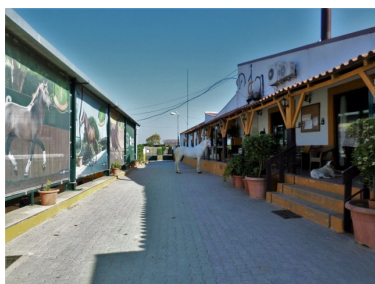
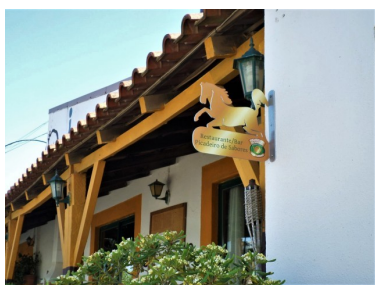


- ✓ Height suitably adapted for wheelchair users

Inside circulation



Outdoor areas



Wheelchair circulation: Total

Signs: Yes

Signs

- ✓ With colour-contrasting texts

Adapted toilet in common areas

- ✓ Toilet suitable for PRM

Characteristics



Access without changes in floor level: Yes

Door width: Less than 78 cm

Door opening: Outward

Free turning space ? 150 cm of diameter: Yes

Height of the toilet seat: High (greater than or equal to 45 cm)

It has support bar(s): Yes

Information

Toilet grab bars: Left-hand side, right-hand side

The bars on the left-hand side are: Folding

The bars on the right-hand side are: Fixed

Sink: With mixer tap, without pedestal

Services and amenities

Sufficient information provided about accessibility to the tourist resource : Yes

Adapted visits or activities for people with disabilities: Yes

Characteristics

Adapted visits or activities for people with disabilities: Physical, cognitive

✓ Documentation with information about the tourist resource

✓ Customer service staff

Staff training

Personal trained in attention to people with disabilities : Yes

Personal available to support people with specific needs: Yes

✓ Materials available

Support Products



Other: Sela Adaptada; Rédeas

Outside areas

Sidewalks: Street with slope