



Centro de Interpretação "Mortágua na Batalha do Bussaco"

Culture — Museums / Exhibition rooms



📍 Street

Rua Dr. João Lopes de Morais, 46 3450-153 Mortágua
Mortágua, Vale De Remígio, Cortegaça e Almaça,
Mortágua (Viseu)
Portugal

☎ Contact

Tel (+351) 231 927 464
turismo@cm-mortagua.pt
<https://www.cm-mortagua.pt/modules.php?name=Sections&sop=viewarticle&artid=13>

📅 Created by

Técnico AP - NL 30/07/2020

📅 Last modification by

Tecnico AP - SD 13/08/2020



The accessibility of this tourism resource has been analyzed by experts

General Information

"Mortágua na Batalha do Bussaco" Centro de Interpretação é um espaço de divulgação, estudo e conhecimento acerca de um acontecimento militar que marcou a região e em particular o concelho de Mortágua há mais de 200 anos (1810), com a terceira invasão a Portugal ordenada por Napoleão Bonaparte. Tratou-se do maior conflito militar ocorrido em território português e o concelho de Mortágua foi palco daquela que haveria de ficar celebrizada como a "Batalha do Bussaco", por ter ocorrido nas faldas e cumeadas da serra do Bussaco.

Entrance



Entrance: Embossed

✓ Name of the tourist resource clearly visible and legible

The entranceway analysed is: The main one

Width of the entrance door: Greater than or equal to 78 cm

Customer Service Area

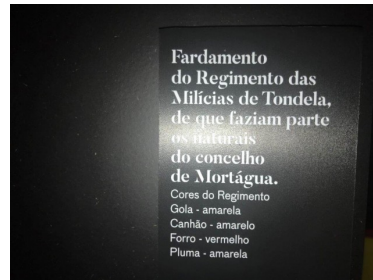
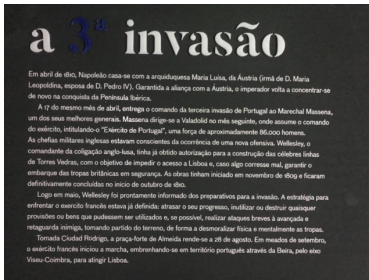
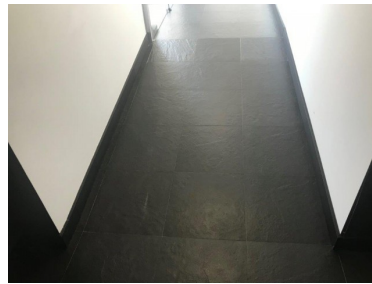
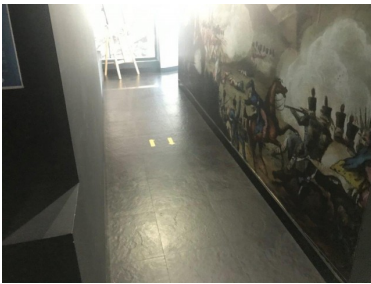
✓ Customer service desk

Characteristics



✓ Near the entrance

Inside circulation



Wheelchair circulation: Total

Adequate lighting: No

Signposting: Yes

Characteristics

Signs: With colour-contrasted texts

Adapted toilet in common areas

- ✓ Toilet suitable for PRM

Characteristics



Access without changes in floor level: Yes

Door width: Greater than or equal to 78 cm

Door opening: Outward

Free turning space ? 150 cm of diameter: Yes

Clear space to transfer to the toilet: Yes

Characteristics

The space is at least 80 cm or greater: Right-hand side

Height of the toilet seat: High (greater than or equal to 45 cm)

It has support bar(s): Yes

Information

Toilet grab bars: Left-hand side, right-hand side

The bars on the left-hand side are: Fixed

The bars on the right-hand side are: Folding

Sink: With mixer tap, without pedestal

Services and amenities

Sufficient information provided about accessibility to the tourist resource : No

Adapted visits or activities for people with disabilities: No

The furnishings facilitate the approach of wheelchair users: Yes

Magnetic induction loop: No

- ✓ Customer service staff

Staff training

Personal trained in attention to people with disabilities : No

Personal available to support people with specific needs: Yes

Personal with knowledge of Sign Language: No

PRM Parking

- ✓ Parking lot reserved PRM

Characteristics



Next to the establishment: Yes

Belongs to the establishment: No

Surface of the parking lot: Horizontal

Well indicated: Yes

With appropriate dimensions: Yes

Outside areas

Sidewalks: Paving stones, without obstacles

Uniform and anti-slip pavement: No